



GMT MONTHLY MEMBERSHIP PROGRESS REPORT

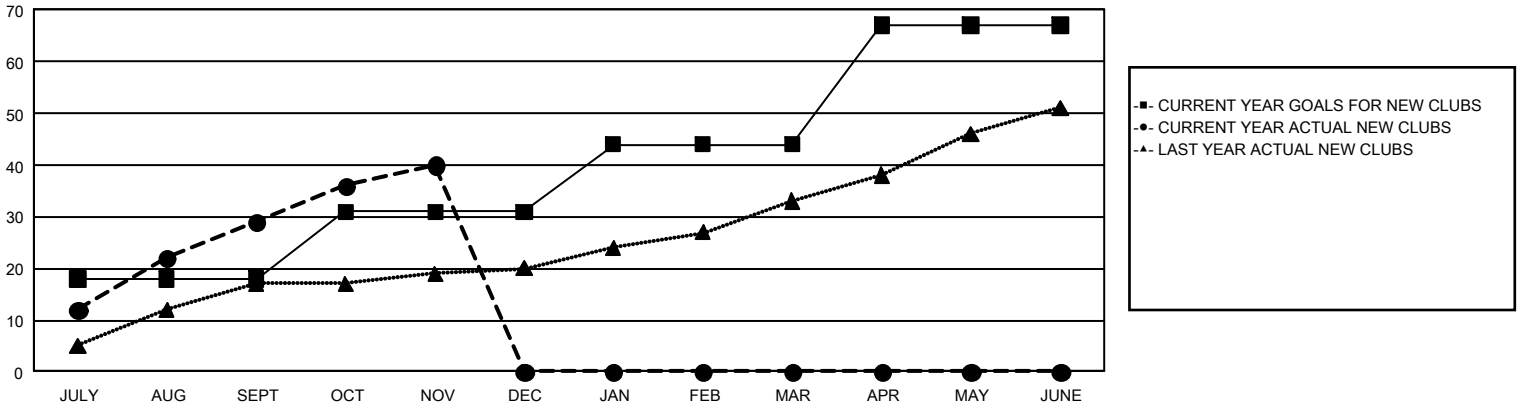
GAT Constitutional Area 7

Results as of: 11/30/2023

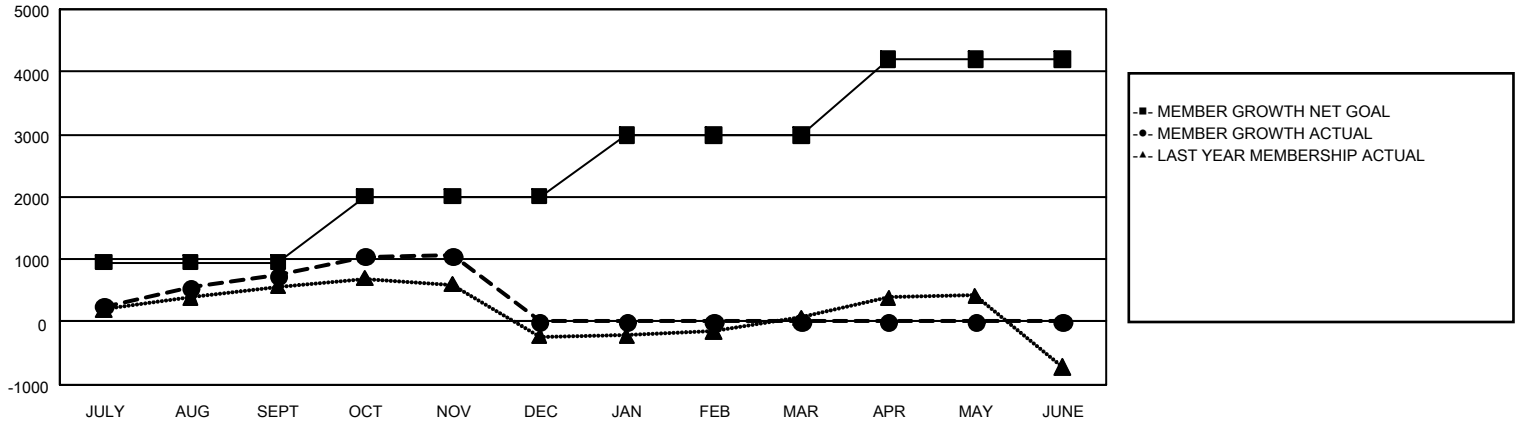
REPORT DOES NOT INCLUDE CLUBS IN UNDISTRICTED AREAS.

Clubs				Members			
RESULTS FOR 2023-2024				RESULTS FOR 2023-2024			
QUARTER	NEW CLUB GOAL	NEW CLUBS	DROPPED CLUBS	QUARTER	MEMBER GROWTH NET GOAL	MEMBER GROWTH ACTUAL	DROPPED MEMBERS ACTUAL (including transfers)
JULY/AUG/SEPT	18	29	21	JULY/AUG/SEPT	957	2,190	1,265
OCT/NOV/DEC	13	11	0	OCT/NOV/DEC	1,049	1,159	781
JAN/FEB/MAR	13	0	0	JAN/FEB/MAR	978	0	0
APR/MAY/JUNE	23	0	0	APR/MAY/JUNE	1,214	0	0

GOALS AND ACTUAL NEW CLUBS CUMULATIVE



GOALS AND ACTUAL MEMBERS CUMULATIVE



DROPPED CLUBS: 21	838 CLUBS OF 1,882 ADDED 1 OR MORE NEW MEMBERS	<u>GENDER DISTRIBUTION</u> MALE 24,498 (56.73%) FEMALE 18,660 (43.21%)
<u>DROPPED MEMBERS</u> DECEASED 189 CLUB CANCELLED 25 OTHER 1,832 <hr/> TOTAL 2,046	CLICK HERE FOR CUMULATIVE MEMBERSHIP DATA	TOTAL FAMILY UNIT MEMBERS 7,429 FAMILY MEMBERS PAYING HALF DUES 3,999